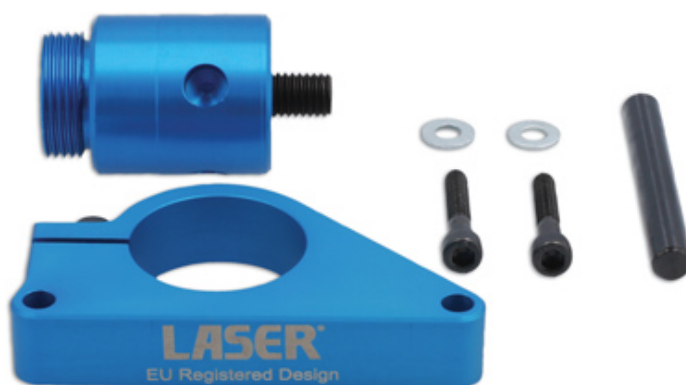


## HP Diesel Fuel Pump Removal Tool - for Mercedes-Benz

The Mercedes-Benz W654 1.6 and 2.0L diesel engines use a timing chain driven high pressure diesel fuel pump. The timing chain is mounted at the back of the engine which means any task involving its removal will require the engine to be removed unless the pump sprocket can be held in place while the pump is extracted. The Laser 8095 allows the user to lock the pump sprocket securely in place while removing and refitting the HP fuel pump.



### Additional Information

- Vehicle applications include: A Class (from 2019), B Class (from 2019), C Class (from 2018), CLA (from 2019), CLS (from 2018), E Class (from 2016), GLB (from 2019), GLC Coupe (from 2019), GLE (from 2019), V Class (from 2019), Vito (from 2019).
- Engine applications include: 1.6L 654.916 & 2.0L 654.920.
- Equivalent to OEM W654 589 00 14 00.
- Designed to be used with the engine in the vehicle.
- EU Registered Design. Made in Sheffield. Use in accordance with OEM instructions.

<http://lasertools.co.uk/product/8095>

